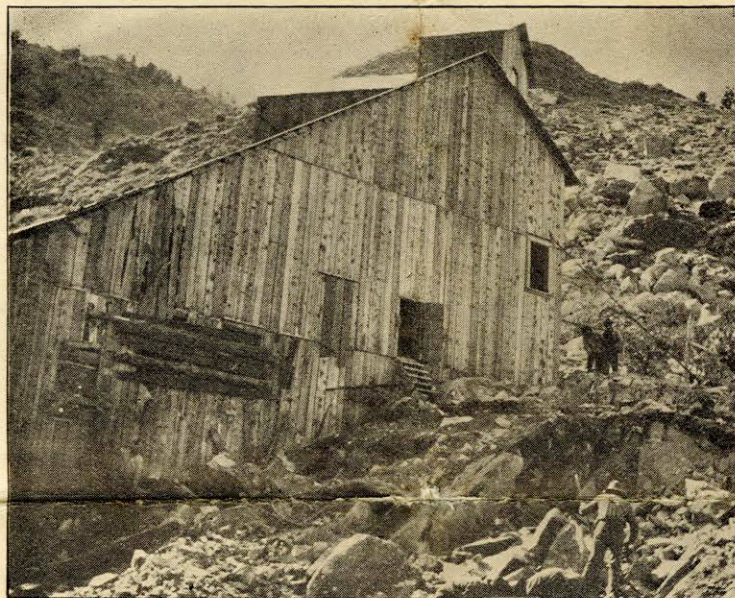


# Wilshire Bishop Creek Mine

## At Last! Bullion Date is Now Guaranteed

---



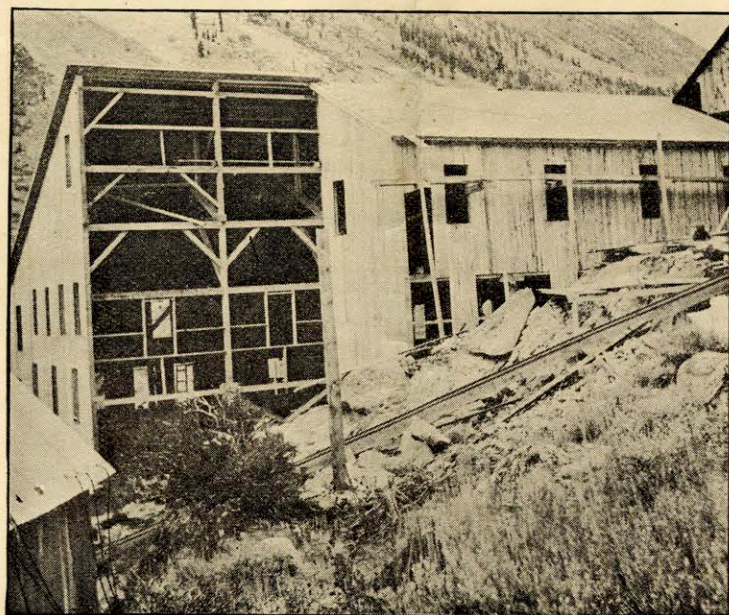
Beginning excavation for the Cyanide House adjoining the Stamp Mill House.

The Cyanide House now stands where man is seen excavating. Photograph taken about Sept. 30.



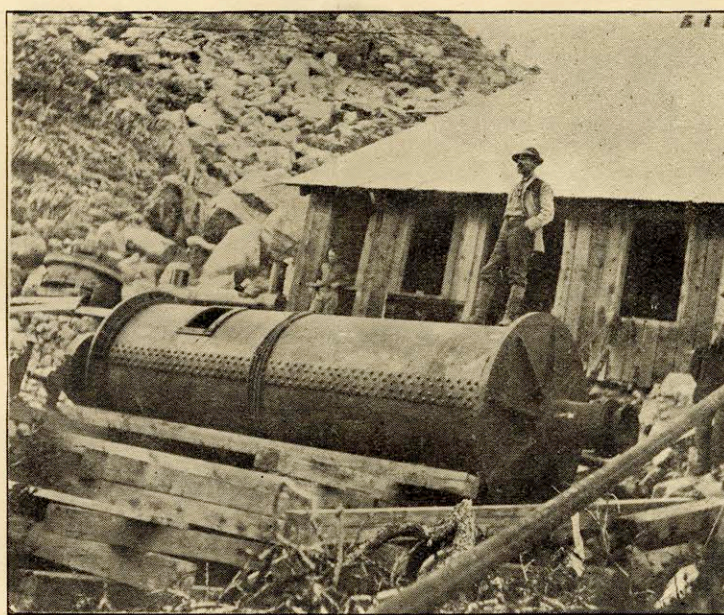
Stamp Mill House and new Cyanide House. Tube mill about ready to be rolled under the roof.

The rolling pebbles within the tube will gather our moss notwithstanding the rolling stone proverb to the contrary.



Building for Cyanide Plant, looking from the West. October 30, 1914.

New Skidway in foreground.



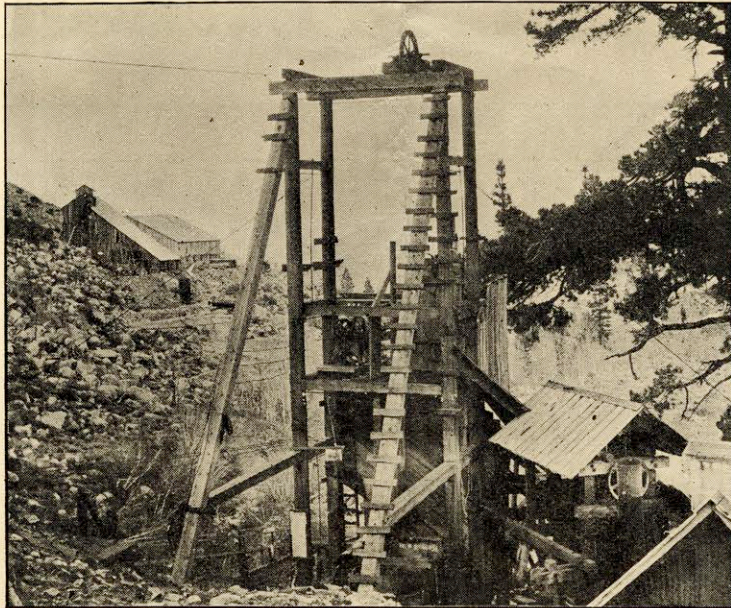
Tube Mill on Nov. 6 just ready to be rolled into place in the Cyanide Building. Wilshire will probably get off before the rolling commences.



# Wilshire Bishop Creek Mine

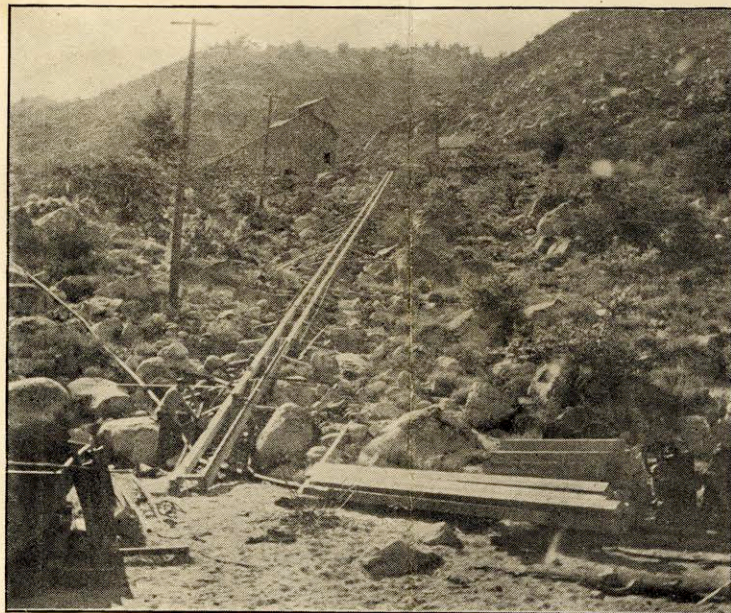
BISHOP, CAL., Nov. 19, 1914.

**T**O THE STOCKHOLDERS: — The photographs herewith show the progress of events at the mine more vividly than can any words of mine. Everything is now under roof and even if we do have heavy

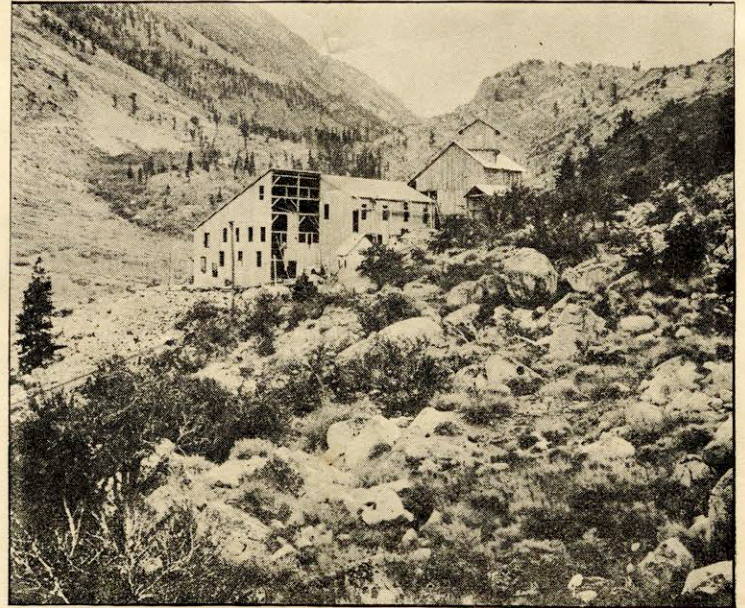


Mill building looking North from the head frame of shaft. October 30, 1914.

weather it should have practically no effect in preventing the work of erection going on right along without delay. Up to date the weather has been perfect, slight frost at night, warm and sunshiny by day.

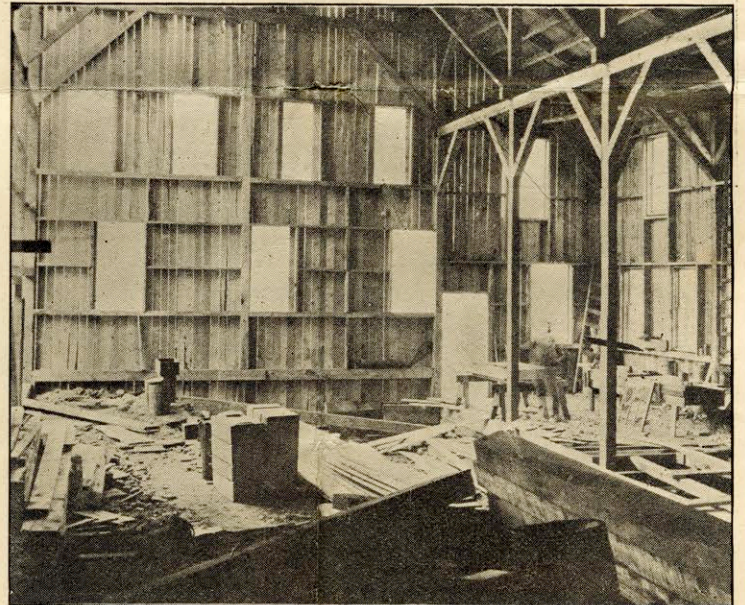


View of new skidway before rails were laid. Stamp Mill House at back. Since this photo was taken the Cyanide House has been erected at head of skidway to left.



Cyanide Plant all under roof November 6.

Money has been coming in better than ever as is evidenced by the following letter from our bankers:



Interior of Cyanide Plant building October 30, 1914.

INYO COUNTY BANK  
BISHOP, INYO CO., CAL.

Oct. 24th, 1914.

MR. GAYLORD WILSHIRE, *President,*  
*Dear Sir:*

*You now have on hand here with us for the Bishop Creek Mine approximately \$11,000.00 in cash, this with the additional credit of \$5,000.00 arranged for, gives you a cash fund of \$16,000.00 ready for use. If the remittances continue to come in from the stockholders for the next ninety days as*

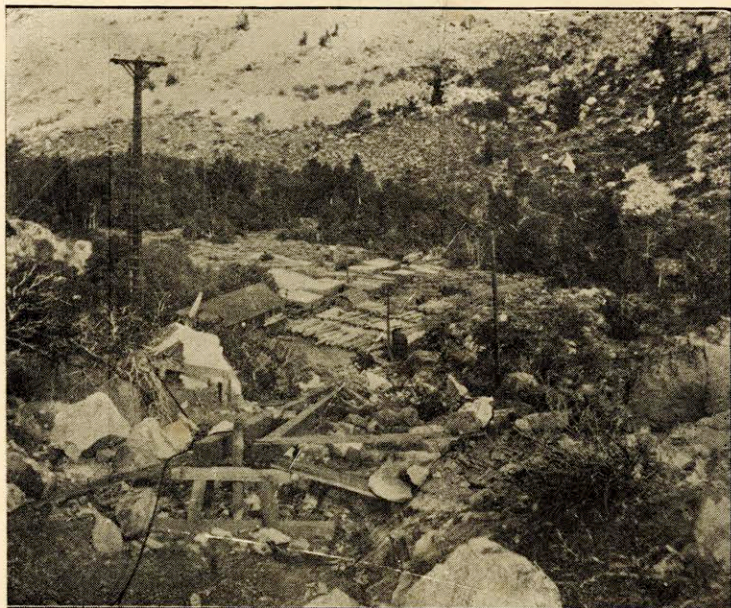


well as they have during this month, I think there is no question now but what you will have sufficient funds to complete everything at the mine and mill, and I hope and believe that we will have the pleasure of handling Bishop Creek Mine bullion bars before 1915 is very far along.

With kindest regards, I am

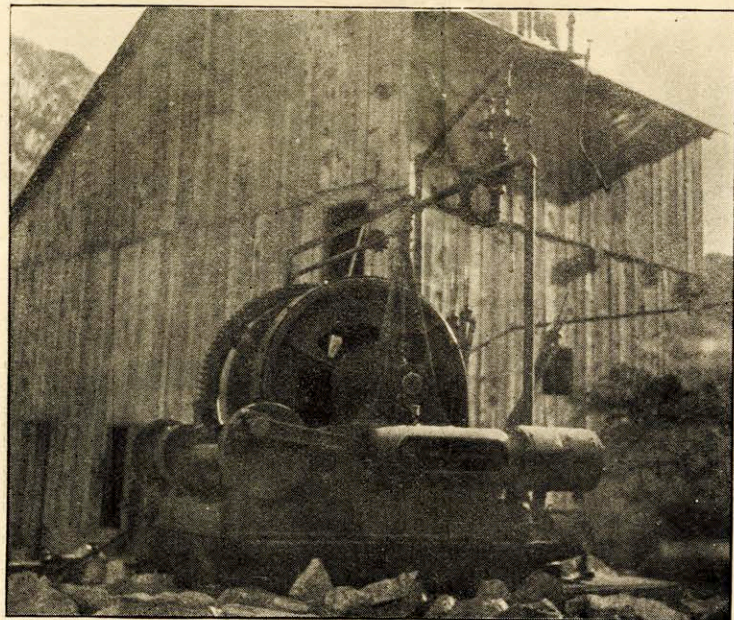
Yours truly

W. W. WATTERSON.

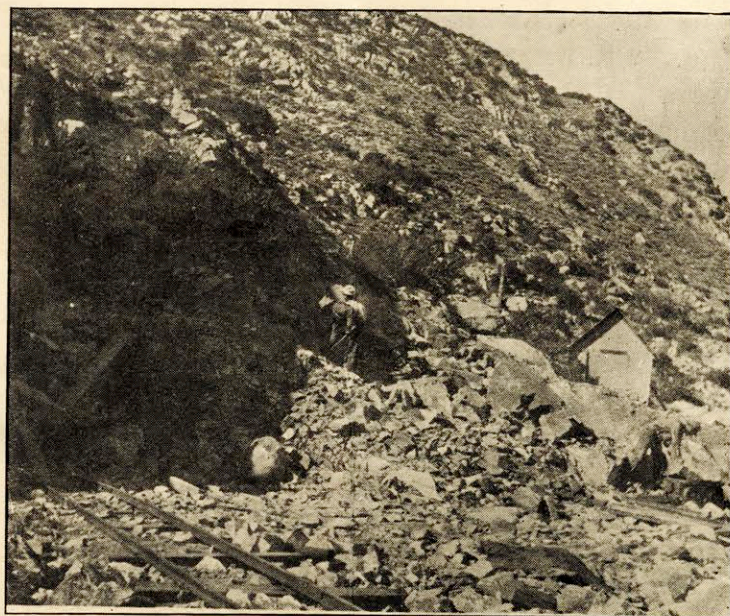


New skidway in foreground, lumber it carried up for Cyanide Plant shown in background.

As a matter of fact money has been coming in so well that I have acceded to Mr. Walter's urgent suggestion that we put in a 75 H.-P. electric hoist at the shaft superseding the present 35 H.-P. hoist. Mr. Walter says it would be quite impossible for us with the old hoist to do justice to the mine as it is now showing up, and rather than take any chances

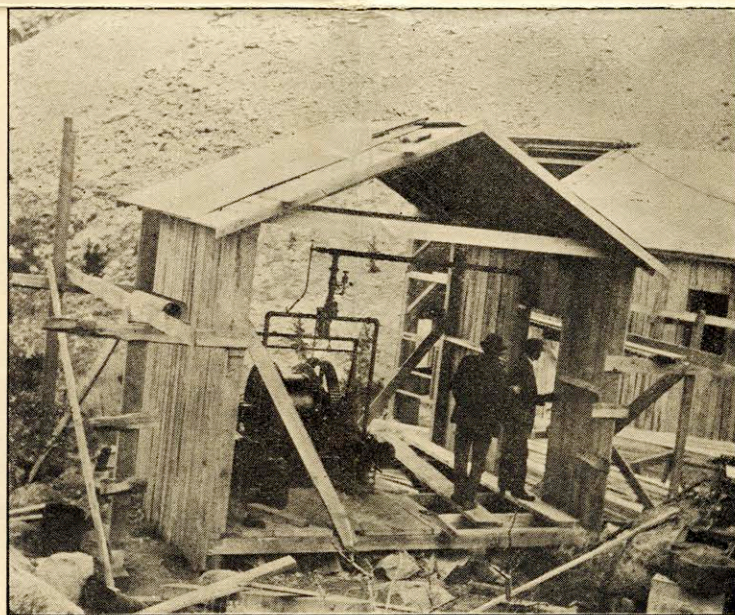


The old compressed air hoist ready for duty at new skidway.



Making ready for the New Hoist House to house the new 75 H.-P. electric hoist for the shaft.

of being short of ore I have decided to put in the new hoist at once rather than wait till we had made a start and take chances on having a shutdown. This new hoist will cost us something, but we can now afford the expenditure, and I am sure the stockholders will approve of our not stinting ourselves in the way of having the equipment first class in every re-



The new skidway Hoist House at head of skidway, October 30, 1914.

spect. We have put the old hoist to work on the new skidway we have built to haul up material for the new Cyanide Plant. It comes in there very handy and will almost save us enough money to pay for the new hoist.

This installation of a new hoist will naturally delay us a little inasmuch as we cannot do any mining until it is completed. Mr.



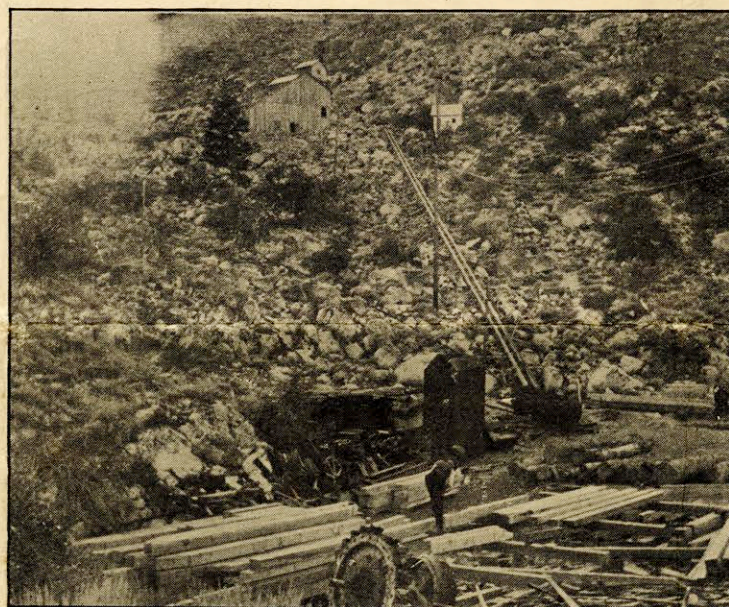
3PEC  
Rare  
TN  
423  
.26  
W55  
1914

Walter wishes to put in at least two months' good solid work on mine development before we start up the Mill, for he wishes to have every facility to keep up the ore supply once we have made a start.

The Cyanide Plant will all be in place before New Years as promised and we will start in on the mine development the moment we can get the new hoist installed. Everything looks most favorable for an early and profitable operation.

I did not intend to continue the sale of Bullion Orders after this month, but inasmuch as the installation of the new hoist will not only take some cash but will also delay us a little on our expected date for operation I have decided to give our supporters one more chance of investing \$100 and having a practically sure thing on getting back \$150 within a very few months.

Faithfully yours,  
GAYLORD WILSHIRE.



The new skidway built to transport the material up the hill for Cyanide Plant. The skidway is operated by the Old Hoist formerly at the shaft.

Since the photo was taken the Cyanide House has been built at head of skidway and adjoining the stamp mill house.